

NH Department of Health and Human Services  
129 Pleasant Street – Hugh Gallen State Office Park  
Concord, NH 03301

**PRESS RELEASE**  
**FOR IMMEDIATE RELEASE**  
**September 26, 2020**

**FOR MORE INFORMATION**  
State Joint Information Center  
603-223-6169  
[jic@dos.nh.gov](mailto:jic@dos.nh.gov)

## **NH DHHS COVID-19 Update – September 26, 2020**

**Concord, NH** – The New Hampshire Department of Health and Human Services (DHHS) has issued the following update on the new coronavirus, COVID-19.

On Saturday, September 26, 2020, DHHS announced 38 new positive test results for COVID-19. There have now been 8,121 cases of COVID-19 diagnosed in New Hampshire. Several cases are still under investigation. Additional information from ongoing investigations will be incorporated into future COVID-19 updates. Of those with complete information, there are four individuals under the age of 18 and the rest are adults with 53% being female and 47% being male. The new cases reside in Hillsborough County other than Manchester and Nashua (13), Rockingham (7), Strafford (5), Merrimack (4), and Sullivan (1) counties, and in the cities of Manchester (6) and Nashua (2).

No new hospitalized cases were identified for a total of 734 (9%) of 8,121 cases. Seven of the new cases had no identified risk factors. Community-based transmission continues to occur in the State and has been identified in all counties. Of those with complete risk information, most of the cases have either had close contact with a person with a confirmed COVID-19 diagnosis or have recently traveled.

DHHS has also announced one additional death related to COVID-19. We offer our sympathies to the family and friends.

- 1 female resident of Hillsborough County, 60 years of age and older

### **Current Situation in New Hampshire**

#### **New Hampshire 2019 Novel Coronavirus (COVID-19) Summary Report (data updated September 26, 2020, 9:00 AM)**

NH Persons with COVID-19 <sub>1</sub>	8,121
Recovered	7,379 (91%)
Deaths Attributed to COVID-19	439 (5%)
Total Current COVID-19 Cases	303
Persons Who Have Been Hospitalized for COVID-19	734 (9%)
Current Hospitalizations	18

Total Persons Tested at Selected Laboratories, Polymerase Chain Reaction (PCR) <sup>2</sup>	265,378
Total Persons Tested at Selected Laboratories, Antibody Laboratory Tests <sup>2</sup>	30,983
Persons with Specimens Submitted to NH PHL	46,459
Persons with Test Pending at NH PHL <sup>3</sup>	1,242
Persons Being Monitored in NH (approximate point in time)	2,450

<sup>1</sup>Includes specimens positive at any laboratory and those confirmed by CDC confirmatory testing.

<sup>2</sup>Includes specimens tested at the NH Public Health Laboratories (PHL), LabCorp, Quest, Dartmouth-Hitchcock Medical Center, Mako, certain hospital laboratories, the University of New Hampshire and their contracted laboratory, and those sent to CDC prior to NH PHL testing capacity.

<sup>3</sup>Includes specimens received and awaiting testing at NH PHL. Does not include tests pending at commercial laboratories.

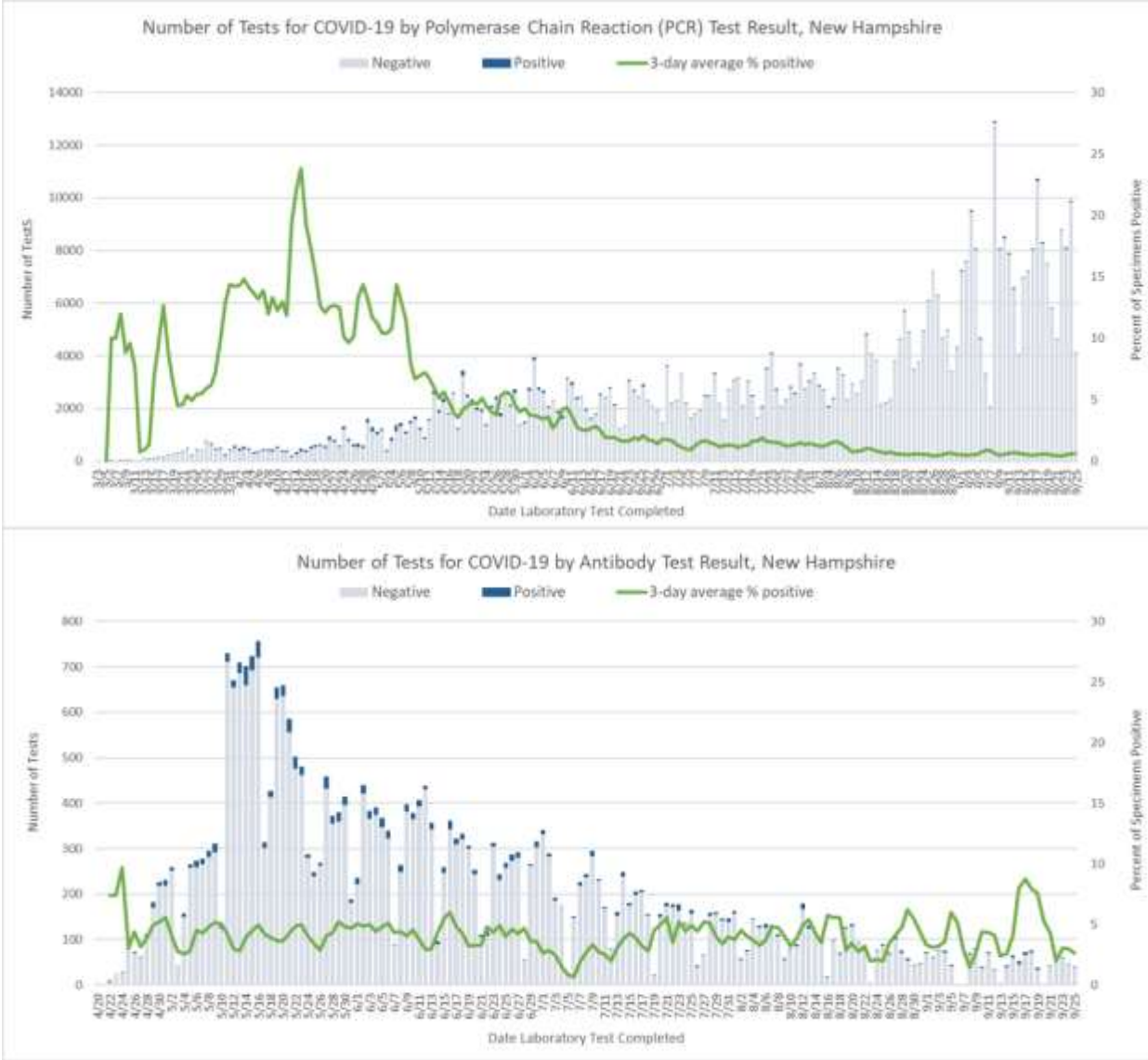
### Number of Tests Conducted by Date of Report to NH DHHS

Polymerase Chain Reaction (PCR) Tests								
Testing Laboratory	9/19	9/20	9/21	9/22	9/23	9/24	9/25	Daily Average
NH Public Health Laboratories	623	1,244	710	826	543	1,073	983	857
LabCorp	865	511	300	680	949	757	244	615
Quest Diagnostics	1,786	2,994	503	791	2,129	1,377	1,248	1,547
Mako Medical	45	29	0	12	9	0	72	24
Dartmouth-Hitchcock Medical Center	724	424	231	917	527	1,032	4	551
Other NH Hospital Laboratory	233	159	218	308	365	417	217	274
Other Laboratory*	285	110	122	140	174	160	92	155
University of New Hampshire**	2,948	355	2,531	5,125	3,425	5,074	1,252	2,959
Total	7,509	5,826	4,615	8,799	8,121	9,890	4,112	6,982
Antibody Laboratory Tests								
Testing Laboratory	9/19	9/20	9/21	9/22	9/23	9/24	9/25	Daily Average
LabCorp	12	0	0	6	8	10	0	5
Quest Diagnostics	22	4	19	37	41	27	29	26
Dartmouth-Hitchcock Medical Center	2	0	7	12	7	5	0	5
Other Laboratory*	0	0	11	1	6	2	11	4

Total	36	4	37	56	62	44	40	40
-------	----	---	----	----	----	----	----	----

\* Includes out-of-state public health laboratories, out-of-state hospital laboratories, and other commercial laboratories not listed in the above table.

\*\* Includes tests conducted at the UNH laboratory and their contracted lab Veritas.



[NH DHHS Daily Update on COVID-19 Archive](#)

For more information, please visit the DHHS COVID-19 webpage at <https://www.nh.gov/covid19>.

###